

» PC/104 – Stack & start your SFF engine «

Small Form Factor

With its extremely compact form factor of only 90 mm x 96 mm, Kontron's PC/104 boards are the ideal platform for innovative SFF designs in applications which only have restricted space available.

Rugged

PC/104 boards feature a high mechanical and electrical resistance by design. Thanks to the rugged connector and soldered components, all boards and peripherals are resistant against shock and vibration. Additionally, a large number of boards are available for the extended temperature range from -40°C up to +85°C, providing high reliability for operation in extreme environments.

Flexible

With its stackable expansion boards for application specific I/Os, PC/104 offers one of the most comprehensive and proven eco-systems of boards and peripherals. And with Kontron's broad product range of verified building blocks all you need to do is stack & start.

Reasons to recommend Kontron PC/104!

- » Compact size with leading-edge SFF processor technology
- » Easy stack & start system design
- » I/O expansion boards for nearly all embedded tasks available off-the-shelf
- » Proven long-term investment security

Need instant information on Kontron's PC/104 ecosystem?
Please visit www.kontron.com/pc-104/

CORPORATE OFFICES

Europe, Middle East & Africa

Oskar-von-Miller-Str. 1
85386 Eching/Munich
Germany
Tel.: +49 (0)8165/ 77 777
Fax: +49 (0)8165/ 77 385
info@kontron.com

North America

14118 Stowe Drive
Poway, CA 92064-7147
USA
Tel.: +1 888 294 4558
Fax: +1 858 677 0898
info@us.kontron.com

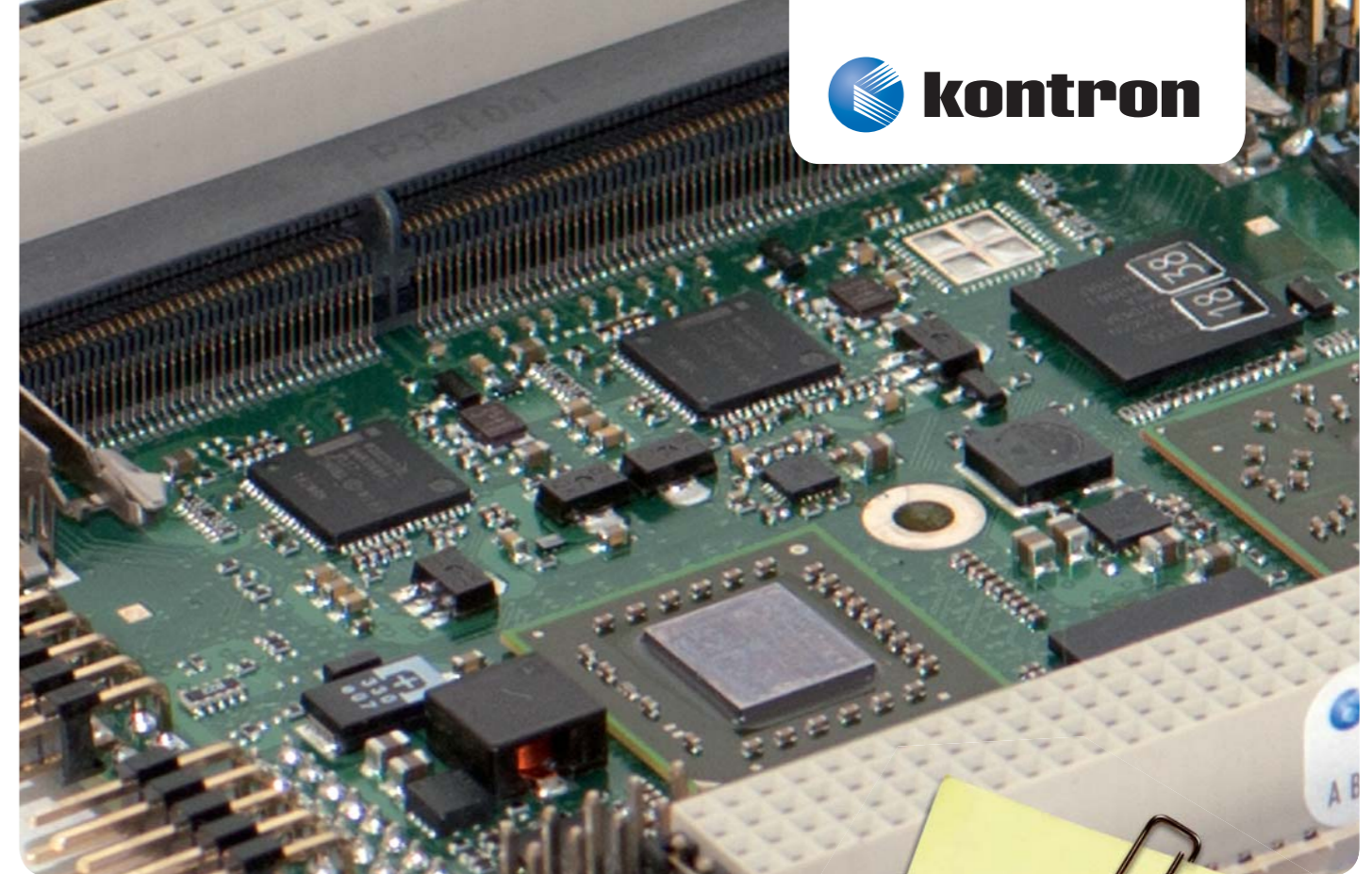
Asia Pacific

17 Building, Block #1, ABP.
188 Southern West 4th Ring Road
Beijing 100070, P.R.China
Tel.: + 86 10 63751188
Fax: + 86 10 83682438
info@kontron.cn



Processor Options

PC/104 modules from Kontron are always available featuring the latest leading-edge processor technology and range from low-power processors for extremely energy-sensitive applications up to powerful multi-core processors with superior graphics capabilities.



» Keep in mind «



» Compact

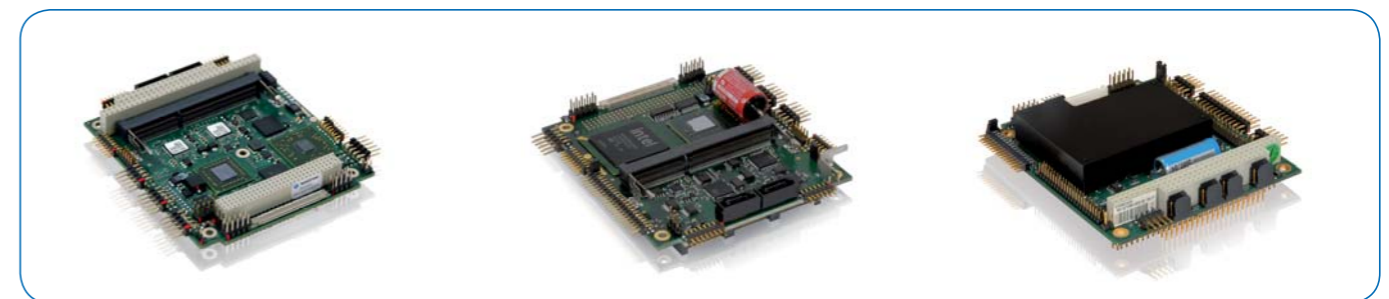
90 mm x 96 mm

» Flexible

Ready for application development – just start!



MICROSPACE®



Copyright © 2003-2009 Kontron AG. All rights reserved. No part of this document may be reproduced, transmitted, stored in a retrieval system, or translated into any language or computer language, in any form or by any means (electronic, mechanical, photocopying, recording, or otherwise), without the express written permission of Kontron Embedded Modules GmbH. DIMM-PC®, PISA®, ETM®, ETExpress®, microETExpress®, X-board® are trademarks or registered trademarks of Kontron Embedded Modules GmbH. All data is for information purposes only and not guaranteed for legal purposes. Information has been carefully checked and is believed to be accurate; however, no responsibility is assumed for inaccuracies. Kontron and the Kontron logo are registered trademarks of Kontron AG. All other brand or product names are trademarks or registered trademarks or copyrights by their respective owners and are recognized. PC/104-20111216-WMH

» Want to be first in the design-win race? «

Choose the most powerful and reliable team: PC/104 and Kontron!

Since 1992, PC/104 remains one of the most reliable and flexible standards for Single Board Computers and is equipped to provide for leading-edge solutions in the years to come. With the latest processor technology such as the Intel® Atom processor and AMD embedded G-Series Accelerated Processing Units, PC/104 is an ideal fit for many SFF solutions. Without compromising from its mechanical footprint and interoperability, PC/104 is constantly adapting new technological developments in PC technology such as PCI and PCI Express without omitting backwards capability. And it brings all the latest interfaces to the chassis – wherever they might be required. Also there are no strict connector interface specifications to limit these capability.

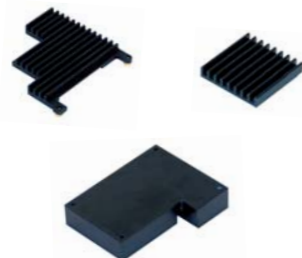
If you want to win the design-win race, you need the advantages of PC/104 technology combined with Kontron's design expertise and quality. Kontron's comprehensive product range of PC/104 SBCs, development kits, peripherals and cable kits offer designed-in ruggedness combined with design expertise which has been proven and tested over decades.

Furthermore, as one of the leading global embedded vendors, Kontron offers long-term availability and Extended Life Cycle Management for the highest investment security for your PC/104 projects. And to further improve the time-to-market and reduce total-cost-of-ownership, Kontron offers dedicated customization and software services including integration services for third party products into your PC/104 applications.

The Kontron MICROSPACE environment at a glance



Evaluation-Kits



Cooling Solutions



Cable-Kits

Large range of peripherals



MSMPS104A



MSM8C104EX



MSMSA104EX



and a lot more ...

HIGHLIGHTS PC/104 CPU BOARDS



MSM-LP

PCI/104-Express™ with Intel® Atom™ processor D525/D425

- » Highest Dual-Core performance for harsh environments
- » 4x USB, 2x SATA, 1x PATA, 4x COM, 2x GbE, up to 4 GB RAM (DDR3)
- » Extended temperature -40°C to +85°C



MSM-e0

PC/104-Plus™ with the new AMD embedded G-Series processor

- » Most powerful graphics for long-term available PC/104-Plus™ designs
- » 1.0 or 1.2 GHz Single Core
- » Up to 4 GB RAM (DDR3)
- » Full ISA support



MSM800XE

AMD Geode™ LX800 PC/104-Plus™ board with thermo junction

- » Up to 1 GB RAM, 2x COM, 4x USB, 1x Ethernet, 1x LPT
- » Sound, KB, MS, FD
- » Extended temperature -40°C to +85°C



MSMST

PCIe/104™ with the configurable Intel® Atom™ processor

- » Intel® Atom™ E6x5CT series and FPGA in one
- » HSMC for custom interfaces
- » Up to 2 GB RAM (soldered)
- » Extended temperature -40°C to +85°C



MSM200XP

MSM200X/XP/XU incl. SMA200: PCI/104-Express CPU-Board with Intel® Atom™ Duo Z510 or Z530 (1.1 or 1.6 GHz)

- » Up to 2 GB RAM (soldered)
- » 4x USB, 4x COM, 1x GbE
- » Extended temperature -40°C to +85°C



MSM945P

MSM945/P incl. SMX945: PCI/104-Express CPU-Board with Intel® Core™ Duo L2400 or L7400 (2x 1.6 GHz / 2x 1.5 GHz) or Intel® Atom N270 (1.6 GHz)

- » Up to 3 GB RAM (1 GB soldered)
- » 4x USB, 1x Ethernet, 2x COM
- » Extended temperature -40°C to +70°C

